

## HECO-REQUIRED PHOTOS

### METER AND ALL EQUIPMENT WIDE-SHOTS

--Include meter box and all equipment installed

--Take multiple photos if necessary

--Take photos **after** all placards are placed and wiring is complete/panels closed

*\*Equipment photo(s) should show the meter and AC disconnect in relation to each other -- if they aren't close enough, include clear photos of the map placards.*



### BATTERY WIDE-SHOTS

--Remember to include these. Might not be located near the meter.



## METER GLOBE & PLACARDS

--Include photo(s) showing the meter number and stickers/map placard



## AC DISCONNECT

a) AC Disconnect Placard (Face of AC disconnect showing warning & map placards)



b) Manufacturers nameplate label (inside of door)



## TESLA GATEWAY NAMEPLATE

(if applicable)

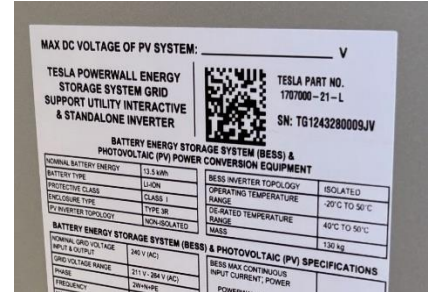


## BATTERY NAMEPLATE(s)

(PW2 sample)



(PW3 sample)



(Encharge sample)



**TIPS:** Take wide-shot pics from 3-6 feet away

Include if applicable: Conduit pathways, ground rod, EV outlets or chargers

Ensure labels, breaker sizes, and serial #s are not blurry

- Update to latest IEEE setting
- Show complete Gateway and/or battery serial #s.
- Set grid charging to "Not Allowed"
- If NEM+ or on PW+ or PW3, set Export to "No Export"



**solar MAN** 507600W - US

**Grid Support Utility Interactive  
Non Isolated Photovoltaic Inverter**

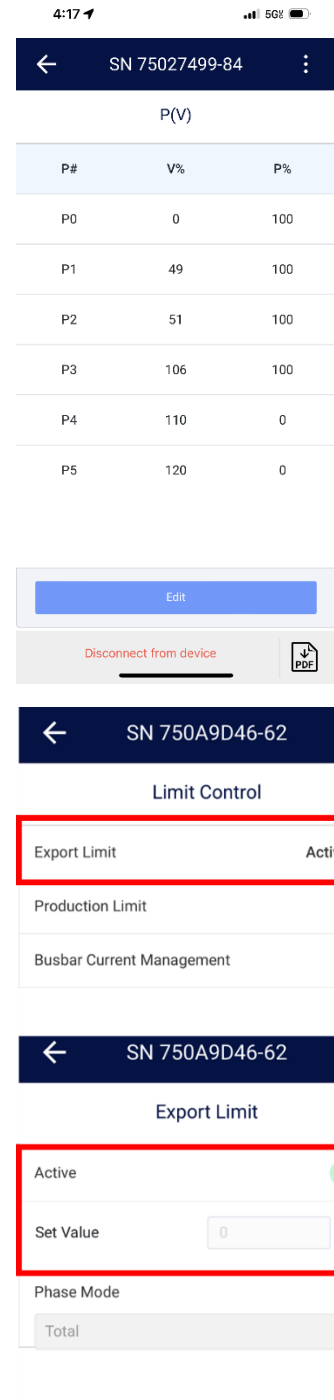
Cooling Voltage Range 100-130V  
Max Continuous Output Power 507600W  
Voltage Regulation Min

Max Continuous Output Current 3000A  
Max Output Peak Current 3600A  
Max Output Voltage 240V AC  
Frequency 50/60 Hz  
Output Power Factor 0.98  
Max Ambient Temperature 55°C  
Dimensions 300\*270\*170mm

P/N: 507600W - US00000002  
SN: 504517 - 07015764 - A2

Accessories Code: 17050406

- DSP1 (v1.1... and up), DSP2 (v2.1... and up)
- Country Code: USA8, Hawaii
- P0-5 settings
- NEM+ or CSS: export set to not allowed/zero






# BAT-10K1P

Nominal Voltage	0.75 Vrms
Rated capacity	56Ah
Output voltage (V at 80% Depth of Discharge)	12.8V
Operating Voltage Range	12.8V - 14.4V
Max. Continuous Output current	4.4 A (min)
Peak Output Power (1 Hz)	7.3 VA (min)
Efficiency (at 100% Depth of Discharge)	90%
Operating Temperature Range	-40°C to +70°C
Operating Temperature Range	-40°C to +70°C
Storage Temperature Range	-55°C to +125°C

For more information, visit [www.solar-edge.com](http://www.solar-edge.com)



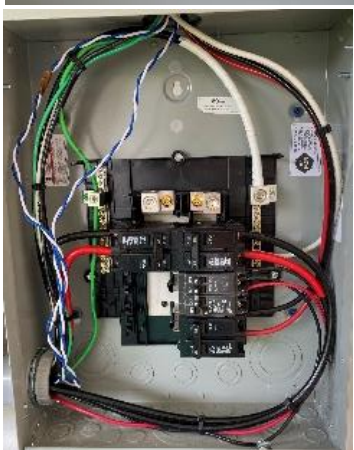

UL 1642, UL 1741, UL 1993, UL 2054, UL 2055, UL 2056, UL 2057, UL 2058, UL 2059, UL 2060, UL 2061, UL 2062, UL 2063, UL 2064, UL 2065, UL 2066, UL 2067, UL 2068, UL 2069, UL 2070, UL 2071, UL 2072, UL 2073, UL 2074, UL 2075, UL 2076, UL 2077, UL 2078, UL 2079, UL 2080, UL 2081, UL 2082, UL 2083, UL 2084, UL 2085, UL 2086, UL 2087, UL 2088, UL 2089, UL 2090, UL 2091, UL 2092, UL 2093, UL 2094, UL 2095, UL 2096, UL 2097, UL 2098, UL 2099, UL 2100, UL 2101, UL 2102, UL 2103, UL 2104, UL 2105, UL 2106, UL 2107, UL 2108, UL 2109, UL 2110, UL 2111, UL 2112, UL 2113, UL 2114, UL 2115, UL 2116, UL 2117, UL 2118, UL 2119, UL 2120, UL 2121, UL 2122, UL 2123, UL 2124, UL 2125, UL 2126, UL 2127, UL 2128, UL 2129, UL 2130, UL 2131, UL 2132, UL 2133, UL 2134, UL 2135, UL 2136, UL 2137, UL 2138, UL 2139, UL 2140, UL 2141, UL 2142, UL 2143, UL 2144, UL 2145, UL 2146, UL 2147, UL 2148, UL 2149, UL 2150, UL 2151, UL 2152, UL 2153, UL 2154, UL 2155, UL 2156, UL 2157, UL 2158, UL 2159, UL 2160, UL 2161, UL 2162, UL 2163, UL 2164, UL 2165, UL 2166, UL 2167, UL 2168, UL 2169, UL 2170, UL 2171, UL 2172, UL 2173, UL 2174, UL 2175, UL 2176, UL 2177, UL 2178, UL 2179, UL 2180, UL 2181, UL 2182, UL 2183, UL 2184, UL 2185, UL 2186, UL 2187, UL 2188, UL 2189, UL 2190, UL 2191, UL 2192, UL 2193, UL 2194, UL 2195, UL 2196, UL 2197, UL 2198, UL 2199, UL 2200, UL 2201, UL 2202, UL 2203, UL 2204, UL 2205, UL 2206, UL 2207, UL 2208, UL 2209, UL 2210, UL 2211, UL 2212, UL 2213, UL 2214, UL 2215, UL 2216, UL 2217, UL 2218, UL 2219, UL 2220, UL 2221, UL 2222, UL 2223, UL 2224, UL 2225, UL 2226, UL 2227, UL 2228, UL 2229, UL 2230, UL 2231, UL 2232, UL 2233, UL 2234, UL 2235, UL 2236, UL 2237, UL 2238, UL 2239, UL 2240, UL 2241, UL 2242, UL 2243, UL 2244, UL 2245, UL 2246, UL 2247, UL 2248, UL 2249, UL 2250, UL 2251, UL 2252, UL 2253, UL 2254, UL 2255, UL 2256, UL 2257, UL 2258, UL 2259, UL 2260, UL 2261, UL 2262, UL 2263, UL 2264, UL 2265, UL 2266, UL 2267, UL 2268, UL 2269, UL 2270, UL 2271, UL 2272, UL 2273, UL 2274, UL 2275, UL 2276, UL 2277, UL 2278, UL 2279, UL 2280, UL 2281, UL 2282, UL 2283, UL 2284, UL 2285, UL 2286, UL 2287, UL 2288, UL 2289, UL 2290, UL 2291, UL 2292, UL 2293, UL 2294, UL 2295, UL 2296, UL 2297, UL 2298, UL 2299, UL 2300, UL 2301, UL 2302, UL 2303, UL 2304, UL 2305, UL 2306, UL 2307, UL 2308, UL 2309, UL 2310, UL 2311, UL 2312, UL 2313, UL 2314, UL 2315, UL 2316, UL 2317, UL 2318, UL 2319, UL 2320, UL 2321, UL 2322, UL 2323, UL 2324, UL 2325, UL 2326, UL 2327, UL 2328, UL 2329, UL 2330, UL 2331, UL 2332, UL 2333, UL 2334, UL 2335, UL 2336, UL 2337, UL 2338, UL 2339, UL 2340, UL 2341, UL 2342, UL 2343, UL 2344, UL 2345, UL 2346, UL 2347, UL 2348, UL 2349, UL 2350, UL 2351, UL 2352, UL 2353, UL 2354, UL 2355, UL 2356, UL 2357, UL 2358, UL 2359, UL 2360, UL 2361, UL 2362, UL 2363, UL 2364, UL 2365, UL 2366, UL 2367, UL 2368, UL 2369, UL 2370, UL 2371, UL 2372, UL 2373, UL 2374, UL 2375, UL 2376, UL 2377, UL 2378, UL 2379, UL 2380, UL 2381, UL 2382, UL 2383, UL 2384, UL 2385, UL 2386, UL 2387, UL 2388, UL 2389, UL 2390, UL 2391, UL 2392, UL 2393, UL 2394, UL 2395, UL 2396, UL 2397, UL 2398, UL 2399, UL 2400, UL 2401, UL 2402, UL 2403, UL 2404, UL 2405, UL 2406, UL 2407, UL 2408, UL 2409, UL 2410, UL 2411, UL 2412, UL 2413, UL 2414, UL 2415, UL 2416, UL 2417, UL 2418, UL 2419, UL 2420, UL 2421, UL 2422, UL 2423, UL 2424, UL 2425, UL 2426, UL 2427, UL 2428, UL 2429, UL 2430, UL 2431, UL 2432, UL 2433, UL 2434, UL 2435, UL 2436, UL 2437, UL 2438, UL 2439, UL 2440, UL 2441, UL 2442, UL 2443, UL 2444, UL 2445, UL 2446, UL 2447, UL 2448, UL 2449, UL 2450, UL 2451, UL 2452, UL 2453, UL 2454, UL 2455, UL 2456, UL 2457, UL 2458, UL 2459, UL 2460, UL 2461, UL 2462, UL 2463, UL 2464, UL 2465, UL 2466, UL 2467, UL 2468, UL 2469, UL 2470, UL 2471, UL 2472, UL 2473, UL 2474, UL 2475, UL 2476, UL 2477, UL 2478, UL 2479, UL 2480, UL 2481, UL 2482, UL 2483, UL 2484, UL 2485, UL 2486, UL 2487, UL 2488, UL 2489, UL 2490, UL 2491, UL 2492, UL 2493, UL 2494, UL 2495, UL 2496, UL 2497, UL 2498, UL 2499, UL 2500, UL 2501, UL 2502, UL 2503, UL 2504, UL 2505, UL 2506, UL 2507, UL 2508, UL 2509, UL 2510, UL 2511, UL 2512, UL 2513, UL 2514, UL 2515, UL 2516, UL 2517, UL 2518, UL 2519, UL 2520, UL 2521, UL 2522, UL 2523, UL 2524, UL 2525, UL 2526, UL 2527, UL 2528, UL 2529, UL 2530, UL 2531, UL 2532, UL 2533, UL 2534, UL 2535, UL 2536, UL 2537, UL 2538, UL 2539, UL 2540, UL 2541, UL 2542, UL 2543, UL 2544, UL 2545, UL 2546, UL 2547, UL 2548, UL 2549, UL 2550, UL 2551, UL 2552, UL 2553, UL 2554, UL 2555, UL 2556, UL 2557, UL 2558, UL 2559, UL 2560, UL 2561,



## ADDITIONAL ELECTRICAL PHOTOS

### **ALL ELECTRICAL PANELS (including meter)**

- Dead front on, and off
- Include all placards/maps, CTs, labels and sub/gen panel guts





**PV RACKING/ROOF REQUIRED**  
**PHOTOS**

Inside J-Boxes after wires spliced



Conduit Flashing



Enphase – microinverter nameplate



PV Module nameplate



PV Racking and Arrays before and after panels are laid (all modules)

